

DO

DO NOT

READ ME

QUICK START GUIDE



"we harden homes"

FINISH THE PROJECT RIGHT

- DO PRIME ALL CUTS
- DO FILL ALL NAIL HOLES
- DO INSTALL 6" ABOVE GRADE
- DO FOLLOW NUSKU FIREBLOCKER INSTALLATION INSTRUCTIONS
- DO FOLLOW YOUR LOCAL BUILDING CODE REQUIREMENTS
- DO FOLLOW HIGHEST BUILDING INDUSTRY STANDARDS
- DO USE ONLY TOP QUALITY FINISHES & FOLLOW MANUFACTURER'S INSTRUCTIONS
- DO APPLY TWO COATS OF TOP QUALITY UNTHINNED ACRYLIC LATEX EXTERIOR FINISH COATING PER PAINT MANUFACTURER'S APPLICATION INSTRUCTIONS
- DO USE BRUSH TO APPLY FINISH OR SPRAY TO ACHIEVE COMPARABLE MIL THICKNESS
- DO SAND WHEN NECESSARY AS GRAIN RAISE IS A NATURAL OCCURENCE IN WOOD
- DO USE FINISHES THAT CONTAIN MILDEWCIDES AND WATER REPELLENTS
- DO APPLY FINISH COATS IMMEDIATELY AFTER INSTALLATION

- DO NOT USE FOR STRUCTURAL APPLICATIONS
- DO NOT USE FOR DECKING, RAILING, FENCES OR TRELLISES
- DO NOT INSTALL OR STORE IN CONTACT WITH THE GROUND
- DO NOT USE VARNISHES OR LACQUERS ON EXTERIOR SURFACES
- DO NOT STORE IN DIRECT CONTACT WITH CONCRETE
- DO NOT INSTALL WHERE WATER SPRINKLERS OR FOUNTAINS CAN REGULARLY WET
- DO NOT USE CAULKING SEALANT IN PLACE OF FLASHING
- DO NOT INSTALL WITH MOISTURE CONTENT ABOVE 15%
- DO NOT PAINT OVER WET NUSKU FIREBLOCKER PRODUCT
- DO NOT STORE WITH TIGHTLY WRAPPED PLASTIC
- DO NOT BE CONCERNED WHEN SEEING A FINGER JOINT AS THE PRODUCT IS REMANUFACTURED MATERIAL



PROPER STORAGE



FILL ALL NAIL HOLES



SEAL ALL CUTS



TIME TO FINISH

FAILURE TO FOLLOW PROPER INSTALLATION & FINISH PRACTICES WILL NEGATE PRODUCT WARRANTIES.

WOOD IS A PRODUCT OF NATURE, SO INDIVIDUAL PIECES VARY IN PERFORMANCE. SIDING, TRIM, FASCIA ARE SINGULAR COMPONENTS OF A BUILDING. THE PERFORMANCE IS DEPENDENT ON MANY CRITICAL FACTORS INCLUDING THE STRUCTURE'S DESIGN, THE CRAFTSMEN'S SKILLS, THE USE OF OTHER MATERIAL, THE PRODUCTS EXPOSURE AND THE CLIMATE. THE MANUFACTURER AND MERCHANT HAVE NO CONTROL OVER THESE VARIABLES. FOLLOWING THIS MANUAL WILL HELP IN ACHIEVING SATISFACTORY PERFORMANCE UNDER MOST CONDITIONS; HOWEVER, IT WILL NOT GUARANTEE FLAWLESS PERFORMANCE. PLEASE REFER TO MANUFACTURER'S WARRANTY FOR ADDITIONAL INFORMATION.



STORAGE

STORE NUSKU FIREBLOCKER IN A GARAGE OR SHED WITH ADEQUATE AIR CIRCULATION AND PROTECTION FROM THE ELEMENTS.

KEEP NUSKU FIREBLOCKER DRY. IF IT CAN'T BE STORED UNDER A ROOF, PROTECT IT WITH A WATERPROOF COVER. MAKE SURE THE COVER IS SECURE BUT LOOSE ENOUGH TO PERMIT AIR CIRCULATION.

STORE NUSKU FIREBLOCKER OFF THE GROUND, AWAY FROM WET CONCRETE AND PROTECTED FROM DIRT, MOISTURE, DIRECT SUN & EXTREME HEAT.

DEFINITELY AVOID



EXCESSIVE MOISTURE



EXCESSIVE SUN



EXCESSIVE HEAT



PROPER CIRCULATION



GROUND CLEARANCE



PROPER COVERAGE

DEFINITELY ALLOW

IF NUSKU FIREBLOCKER IS EXPOSED TO EXCESSIVE HEAT OR SUN IT MAY SHRINK CAUSING CUPPING, CHECKING OR SAP BLEED. IF NUSKU FIREBLOCKER IS EXPOSED TO EXCESSIVE MOISTURE IT CAN SWELL, RAISE GRAIN OR BLEED TANNINS.



INSTALLATION

DO

DO USE NONCORROSIVE NAILS

DO USE RINGED-SHANK WOOD SIDING NAILS

DO USE PROPERLY SIZED NAILS

DO USE BUILDING PAPER WITH RATING OF MIN. 5 PERMS

DO USE BEVEL CUTS TO MINIMIZE GAPS

DO ALLOW 1/8" EXPANSION GAP ON RABBETS

DO NOT

DO NOT USE COMMON STEEL OR POOR QUALITY GALVANIZED NAILS

DO NOT USE CASING, FINISHING OR OTHER SMALL-HEAD NAILS

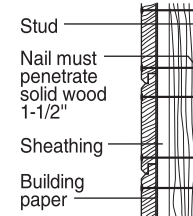
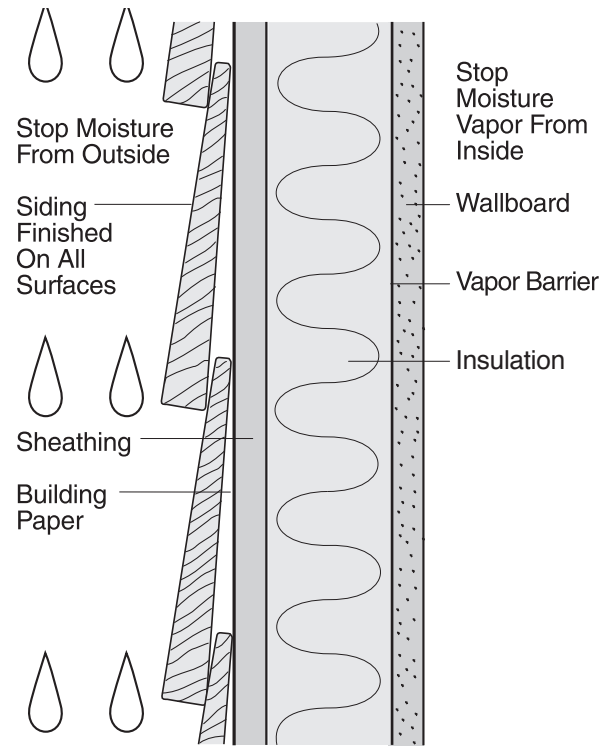
DO NOT STAPLE NUSKU FIREBLOCKER

DO NOT NAIL THROUGH TIP OF UNDERCOURSE

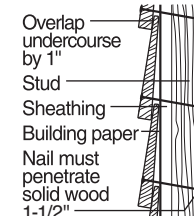
DO NOT NAIL TO SHEATHING ONLY

DO NOT OVERDRIVE NAILS

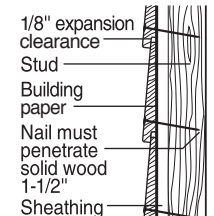
EXAMPLES OF VERTICAL & HORIZONTAL INSTALLATION



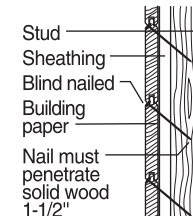
SHIPLAP



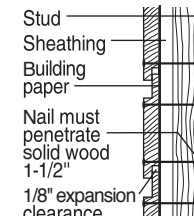
PLAIN BEVEL



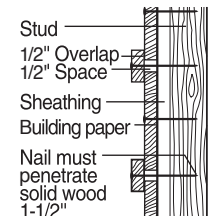
RABBETED BEVEL



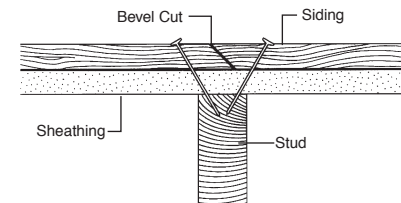
TONGUE & GROOVE



CHANNEL SHIPLAP



BOARD & BATTEN



SEAL & FILL YOUR CUTS & NAIL HOLES

DO USE TOP QUALITY FINISHES & APPLY FINISH COATS IMMEDIATELY AFTER INSTALLATION